

# HI·MACS

The shape of your ideas

**PRESS RELEASE**

## **The Power of Green: HIMACS Maui Shapes a Renovated Vilnius Kitchen**



## The Power of Green: HIMACS Maui Shapes a Renovated Vilnius Kitchen



Between mid-century and industrial influences, an old apartment in Vilnius, Lithuania, has been given a new lease of life through a renovation project by architect Veronika Virsiciute. At the heart of the home lies the kitchen: a bold green island with a generous worktop in [HIMACS Maui](#), designed to integrate all key functions into a single, striking unit.

The renovation of this private apartment involved a complete transformation of the interior, turning it into contemporary space while preserving the home's original character. Some architectural features – such as the elegant herringbone parquet, high ceilings and period windows – have been carefully maintained, both for their authenticity and to honour the apartment's history.

In addition, to maximise the building's distinctive red-brick construction, the plaster was stripped from one wall in the open-plan living and kitchen area, revealing the original masonry. This industrial touch creates a harmonious dialogue with the modern mid-century-inspired

HIMACS Media contact for Europe:

Mariana Fredes – Ph. +41 (0) 79 693 46 99 – [mfredes@lxhausys.com](mailto:mfredes@lxhausys.com)

High resolution images available: <https://www.lxhausys.com/eu-en/case-studies>

# HI·MACS

furnishings, the tropical upholstery of the retro-style armchairs, and the dramatic kitchen island.



## **Deep green for an unconventional kitchen**

The expansive island takes centre stage, concentrating storage, sink and appliances into one compact unit. The only exception is the fridge, discreetly concealed within the opposite wall cabinets – a smart design choice that optimises space in this open-plan environment.



The island immediately draws the eye with its generous volumes entirely wrapped in a deep green finish. This bold colour choice anchors the space with distinctive personality. On one side, the island houses the oven and seamlessly integrated cabinetry, while the other sides are clad with slim, elongated cement tiles, producing a striking visual effect.

HIMACS Media contact for Europe:

Mariana Fredes – Ph. +41 (0) 79 693 46 99 – [mfredes@lxhausys.com](mailto:mfredes@lxhausys.com)

High resolution images available: <https://www.lxhausys.com/eu-en/case-studies>



# HI·MACS

This eye-catching design is crowned by an expansive **HIMACS worktop**, which serves a dual function: a practical working surface with integrated hob and sink, and a breakfast bar for shared meals and refreshments. To ensure aesthetic coherence with the overall design, , Maui from the HIMACS Volcanics collection was chosen, an intense, deep green scattered with delicate speckles, evoking the raw beauty of volcanic landscapes.

**HIMACS** is the ideal material for modern kitchens, thanks to its perfect balance of durability, hygiene and design versatility. Backed by a 15-year warranty, this premium solid surface is completely non-porous and seamlessly installed, leaving nowhere for dirt, germs and mould to lurk. Silky-smooth to the touch, it is easy to clean with common household products. In addition, **HIMACS** offers excellent resistance to everyday use, ensuring its original beauty lasts over time.



Watch the video [HERE](#)

## PROJECT INFORMATION

### Project:

Colour Touch | Private Home Kitchen

### Location:

Vilnius, Lithuania

### Architect:

Veronika Virsiciute | [@space\\_and\\_liberty](#)

### HIMACS Supplier:

Nordstock Baltica

### Material:

HIMACS [Maui VG21](#) – [www.lxhausys.com/eu](http://www.lxhausys.com/eu)

### HIMACS element:

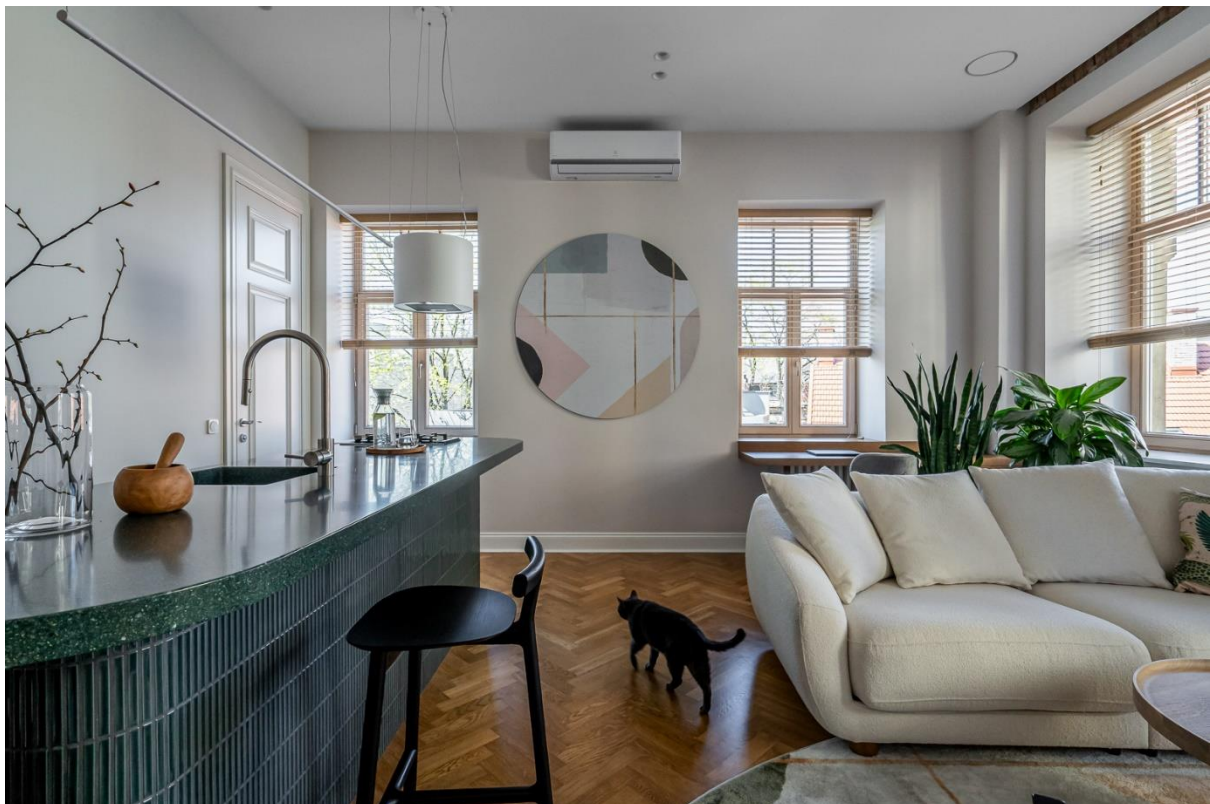
Kitchen island worktop

### Photography:

Gerda Ramone – [www.interioshot.com](http://www.interioshot.com)

HIMACS Media contact for Europe:

Mariana Fredes – Ph. +41 (0) 79 693 46 99 – [mfredes@lxhausys.com](mailto:mfredes@lxhausys.com)  
High resolution images available: <https://www.lxhausys.com/eu-en/case-studies>



## HIMACS

The shape of your ideas

[www.lxhausys.com/eu/himacs](http://www.lxhausys.com/eu/himacs)

HIMACS is a solid surface material that can be moulded into any shape. It is widely used for architectural and interior applications, such as sculptural and high-performance wall cladding or kitchen, bathroom and furniture surfaces, in commercial, residential and public space projects. It is composed of minerals, acrylic and natural pigments that come together to provide a smooth, non-porous and visually seamless surface which meets the highest standards for quality, aesthetics, fabrication, functionality and hygiene – offering many advantages over conventional materials.

HIMACS provides limitless possibilities for surfacing solutions and inspires creative minds from all over the world. **Zaha Hadid, Jean Nouvel, Rafael Moneo, Karim Rashid, Marcel Wanders and David Chipperfield**, among others, have completed fabulous projects using HIMACS.

Proud to be at the forefront of innovation, LX Hausys made Solid Surface history with the introduction of **HIMACS Ultra-Thermoforming**, a pioneering formulation which pushes the boundaries of solid surface shaping to significant new levels with 30% greater thermoplastic capability. Furthermore, **HIMACS Intense Ultra** is a groundbreaking advance that now combines the qualities of both **Intense Colour Technology** and **Ultra-Thermoforming**.

To add to the benefits of working with HIMACS, now the iconic HIMACS Alpine White, plus a wide selection of colours, come with SCS certified pre-consumer recycled content for a more sustainable product offering.

HIMACS uses a simple heating process to give three-dimensional thermoplastic forming capabilities, allows visually seamless designs, offers a virtually limitless range of colours and – for some shades – exhibits a special translucency when exposed to light. Although HIMACS is almost as robust as stone, it can be worked in a similar way as wood: it can be sawn, routed, drilled or sanded.

HIMACS is made using a next-generation technology, the **thermal cure**. The temperature reached during the manufacturing process sets HIMACS apart from other solid surfaces and creates a denser surface that is even sturdier, more homogeneous and more durable, and with better resistance and superior thermoforming results.

HIMACS does not absorb humidity, is highly resistant to stains and is easy to clean, maintain and repair. HIMACS is composed from premium-quality materials, ensuring a surface that is free from harmful substances such as silica, formaldehyde, VOC emissions, and nanoparticles. Prioritising health and safety, HIMACS offers peace of mind for any environment.

Countless internationally recognised certificates attest to the quality of HIMACS in terms of ecological commitment, hygiene and fire resistance – being the first Solid Surface in the market to receive the official **European Technical Approval (ETA) for façades** – for the Alpine White S728 colour.

HIMACS offers a 15-year warranty for products fabricated by a Quality Club Member.

For more information and to stay connected, visit our [EU WEBSITE](#), [UK WEBSITE](#) and our [newsroom](#).

*Let's connect!*



**HIMACS** is designed and produced by **LX Hausys (formerly LG Hausys)**, a world leader in the technology sector and a subsidiary of LX Holdings Corp.

HIMACS Media contact for Europe:

Mariana Fredes – Ph. +41 (0) 79 693 46 99 – [mfredes@lxhausys.com](mailto:mfredes@lxhausys.com)

High resolution images available: <https://www.lxhausys.com/eu-en/case-studies>