

# HI.MACS

The shape of your ideas

**PRESS RELEASE**

## **A Life Afloat HIMACS transforms a houseboat in Amsterdam**



## A Life Afloat

### HIMACS transforms a houseboat in Amsterdam



**On the calm waters of one of Amsterdam’s historic canals, a distinctive houseboat is moored, featuring refined minimalist interiors that combine the charm of these unique dwellings with the comfort and demands of contemporary living. In this modern floating home, HIMACS plays a key role, creating durable surfaces and structural elements designed to stand the test of time.**

A symbol of the city, houseboats represent an intriguing alternative way of living. Originally, old barges and traditional vessels were repurposed after the Second World War to address housing shortages. Over time, purpose-built solutions have emerged, such as “arks” – new floating residential units characterised by horizontal layouts, expansive panoramic glazing and clean, geometric architecture.

Within one of these distinctive homes on water, Dutch bespoke interior specialist **Houtwerk Beverwijk** was responsible for the kitchen, bathroom and external window frames, selecting premium **HIMACS solid surface** to ensure high performance, long-term durability and a flawless aesthetic.

#### **HIMACS Media Contact – Europe**

Mariana Fredes | +41 (0)79 693 46 99 | [mfredes@lxhausys.com](mailto:mfredes@lxhausys.com)  
High-resolution images available on request: [NEWSROOM](#)

# HIMACS

## A kitchen with a view over the canal

Stepping aboard, visitors are welcomed into a bright and airy open-plan space that seamlessly combines kitchen, dining and living areas. Positioned in front of two large windows, the kitchen is fabricated in **HIMACS Cream** and benefits from uninterrupted views over the canal, enjoying exceptional natural light throughout the day.

In keeping with the minimalist aesthetic, the kitchen is conceived as a clean and essential architectural composition. The worktop integrates both the sink and an induction hob with built-in extraction, while the wall units – featuring 12 mm thick fronts – are finished with discreet handles that reinforce the overall visual clarity.

**HIMACS** is ideally suited to kitchen environments thanks to its outstanding hygienic properties. Its non-porous, seamless surface prevents the build-up of dirt and inhibits the growth of microorganisms such as bacteria, germs and mould, ensuring a cleaner and safer environment.



Alongside the **HIMACS kitchen**, a fully equipped wall unit incorporates an oven, wooden cabinetry and open shelving, providing additional storage and functionality. The **HIMACS Cream** tone, combined with the warmth of wood, creates a contemporary, welcoming and harmonious atmosphere.

This setting is further enhanced by the sculptural **Tripod Light**, designed by **Maarten Diederix** for **ITEM Amsterdam**, Houtwerk's sister company. Inspired by natural world, the lamp evokes a flower about to bloom: its three HIMACS "petals" enclose the light source and gently open downwards, forming a stable base that allows the piece to stand independently.

### HIMACS Media Contact – Europe

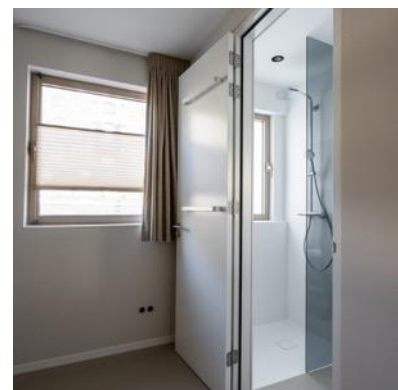
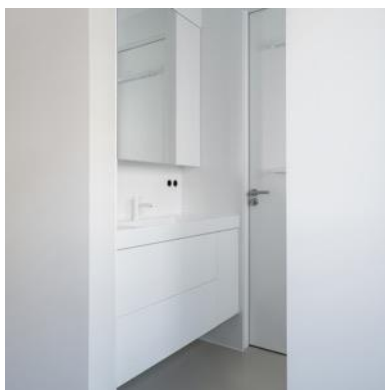
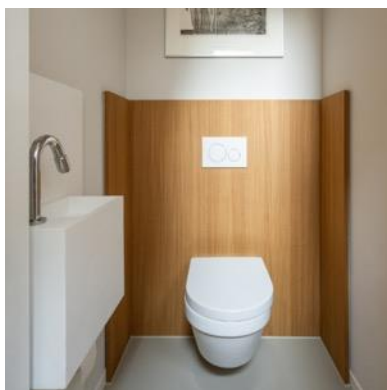
Mariana Fredes | +41 (0)79 693 46 99 | [mfredes@lxhausys.com](mailto:mfredes@lxhausys.com)  
High-resolution images available on request: [NEWSROOM](#)

# HIMACS

## Compact and functional: a smart bathroom

HIMACS' hygienic properties extend into the bathroom, a compact room positioned between the wardrobe and bedroom, with dual access from both spaces. Every element has been carefully considered: on one side, a walk-in shower formed by three panels of **HIMACS Alpine White** creates a micro-architectural feature, while on the other, a bespoke vanity unit with integrated basin completes the space with a refined, minimalist solution.

To optimise the limited space, the toilet is located in a separate compact area, which also includes a small HIMACS basin, improving spatial organisation and overall functionality.



## Perfect frames, impeccable details

One of the project's main challenges was the fabrication of the external **HIMACS window frames** for the generous fenestration of the houseboat, requiring a high level of precision and technical expertise. For Houtwerk Beverwijk, using HIMACS in exterior applications is familiar, having successfully applied the material in a previous renovation of a historic building.

### HIMACS Media Contact – Europe

Mariana Fredes | +41 (0)79 693 46 99 | [mfredes@lxhausys.com](mailto:mfredes@lxhausys.com)  
High-resolution images available on request: [NEWSROOM](#)

# HIMACS

The warm tone selected for this application, **HIMACS Peanut Butter**, pairs harmoniously with the timber cladding, creating a coherent architectural language. During installation, every angle and joint had to align with absolute precision to withstand changing weather conditions, temperature fluctuations and humidity.

HIMACS also demonstrates its superior qualities outdoors: in addition to exceptional durability, it offers strong resistance to fire and water – essential for this type of project. It resists moisture absorption, preventing mould formation, and withstands weathering and UV exposure while maintaining its beauty and performance over time.



## HIMACS Media Contact – Europe

Mariana Fredes | +41 (0)79 693 46 99 | [mfredes@lxhausys.com](mailto:mfredes@lxhausys.com)  
High-resolution images available on request: [NEWSROOM](#)

# HI.MACS

## PROJECT INFORMATION

**Project:** Houseboat Amsterdam

**Location:** Amsterdam, Netherlands

**Architect:** [Studio Schaeffer](#) | Instagram [@studioschaeffer](#)

**HIMACS fabricator:** Houtwerk | Website [houtwerk.nl](#) | Instagram [@houtwerk.nl](#)

**HIMACS supplier:** Baars & Bloemhoff | Website [baars-bloemhoff.nl](#) | Instagram [@baars.bloemhoff](#)

**Hull Builder:** [ABCwaterwoningen.nl](#)

**Material:** HIMACS S009 Cream, S028 Alpine White. G100 Peanut Butter | Website

[www.lxhausys.com/eu](#) | Instagram [@himacseurope](#)

**HIMACS applications:** Exterior window frames, interior window sills, stair treads, skirting boards, bathroom, kitchen, Tripod Light by ITEM Amsterdam

**Photography:** [Lotte van Uittert](#)

## HIMACS Media Contact – Europe

Mariana Fredes | +41 (0)79 693 46 99 | [mfredes@lxhausys.com](mailto:mfredes@lxhausys.com)

High-resolution images available on request: [NEWSROOM](#)

# HIMACS

## HIMACS

### *The shape of your ideas*

HIMACS is a high-performance solid surface material for architectural and interior applications, from façades and wall cladding to kitchens, bathrooms and bespoke furniture in commercial, residential and public spaces. Composed of minerals, acrylic and natural pigments, it delivers a smooth, non-porous and visually seamless surface meeting the highest standards of design, fabrication, durability and hygiene.

**Thermoformable and seamless**, HIMACS can be shaped into virtually any form, enabling fluid three-dimensional designs. Combining stone-like robustness with the workability of wood, it offers both creative freedom and technical precision.

Specified by leading architects and designers such as **Zaha Hadid, Jean Nouvel, Rafael Moneo, Karim Rashid, Marcel Wanders** and **David Chipperfield**, HIMACS is widely recognised in contemporary architecture and design.

Produced using **advanced thermal curing technology**, HIMACS features a dense, homogeneous structure for enhanced strength and durability. The **HIMACS Ultra range** combines advanced thermoforming capabilities with enhanced colour performance, enabling a minimum internal radius of 6 mm and delivering deep, consistent tones for expanded design possibilities.

HIMACS supports responsible specification through measurable sustainability attributes. Its durability, reparability and seamless fabrication extend product lifecycles and reduce waste, while off-cuts can be reused during fabrication.

Non-porous and easy to maintain, HIMACS does not emit VOCs or contain silica, formaldehyde or nanoparticles. Certified for indoor air quality, including **GREENGUARD Gold** and the highest level of **IAC certification**, it supports safe and healthy environments.

An expanding selection of colours, including Alpine White, incorporates **SCS-certified pre-consumer recycled content**, while HIMACS Shapes contain at least 8% certified recycled content. Environmental Product Declarations (EPDs) are available, and the material contributes to **LEED, BREEAM** and **DGNB** certification schemes.

Manufactured under ISO 14001 standards, HIMACS benefits from continuous environmental performance monitoring, including resource efficiency and reduced emissions.

Certified for quality, safety, hygiene and fire performance, HIMACS was the first Solid Surface to receive a European Technical Assessment (ETA) for façade applications (Alpine White S728).

A **15-year warranty** is provided for products fabricated and installed by certified members of the **HIMACS Quality Club network**.

HIMACS is designed and produced by LX Hausys, a global leader in advanced materials and a subsidiary of LX Holdings Corp.

#### **Useful resources:**

[Official Website](#) | [Newsroom](#) | [Fabrication Knowledge Base \(AI-powered platform\)](#)

#### **HIMACS Media Contact – Europe**

Mariana Fredes | +41 (0)79 693 46 99 | [mfredes@lxhausys.com](mailto:mfredes@lxhausys.com)  
High-resolution images available on request: [NEWSROOM](#)

# HI.MACS

Stay connected:

[Newsletter](#) | [Instagram](#) | [Facebook](#) | [LinkedIn](#) | [Pinterest](#) | [YouTube](#)

**HIMACS Media Contact – Europe**

Mariana Fredes | +41 (0)79 693 46 99 | [mfredes@lxhausys.com](mailto:mfredes@lxhausys.com)

High-resolution images available on request: [NEWSROOM](#)